

2021

ZOOLOGY — HONOURS — PRACTICAL

Paper : CC-6P

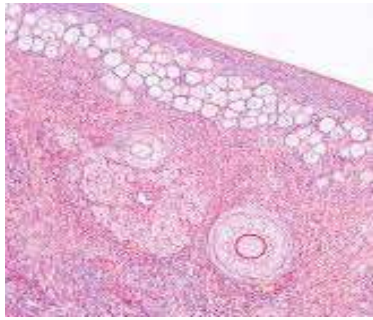
Full Marks : 30

Time : 2 hours

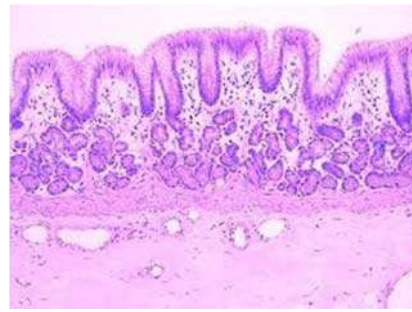
The figures in the margin indicate full marks.

1. Identify the following histological sections with four distinct features of each.

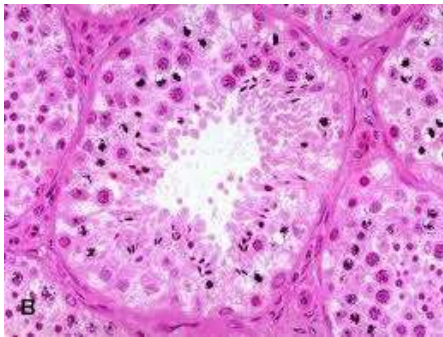
(1+4)×4



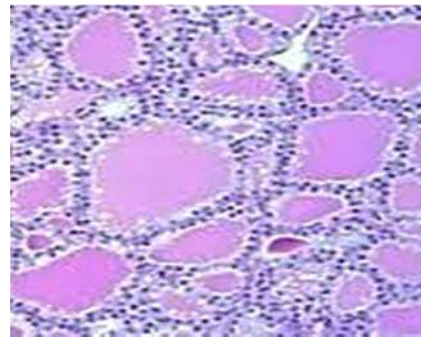
Specimen A



Specimen B



Specimen C



Specimen D

2. Write the procedure for preparation of squamous epithelium from buccal smear. Draw and label it. 3+1+1
3. Write the procedure of preparing thin tissue sections from the paraffin block. 5