

2021
Zoology General Practical
Paper: GEC4-P
Full Marks-30

The Figure in the margin indicates the full marks

Q1. In the evening primrose pure red-flowered plants are crossed with white flowered plants. F₁ are all pink-coloured plants. Inbreeding F₁ plants produced offspring as following:

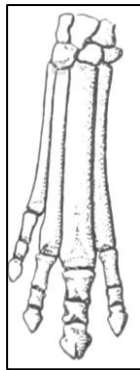
Red 113 Pink 242 and White 129

Do chi- square to determine goodness of fit for the given ratio 1:2:1.

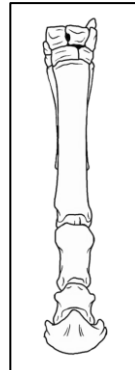
(Hypothesis, Calculation, Comment)

(2+6+2)

Q2. Identify following specimen with its time of origin and features (1+1+3)×2=10



Specimen A



Specimen B

Q3. Identify the human genetic defect from the following karyotype with reason. (1+4) x2=10

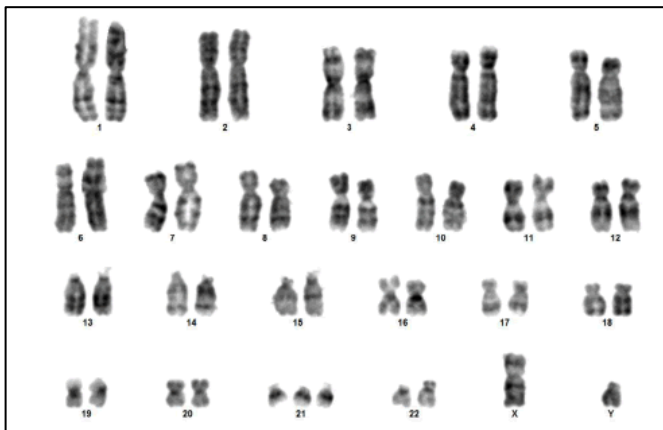


Plate A

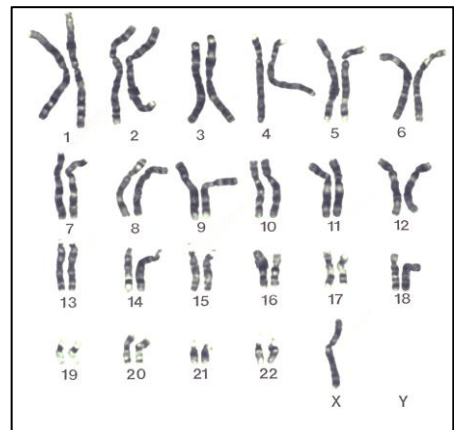


Plate B