

2020

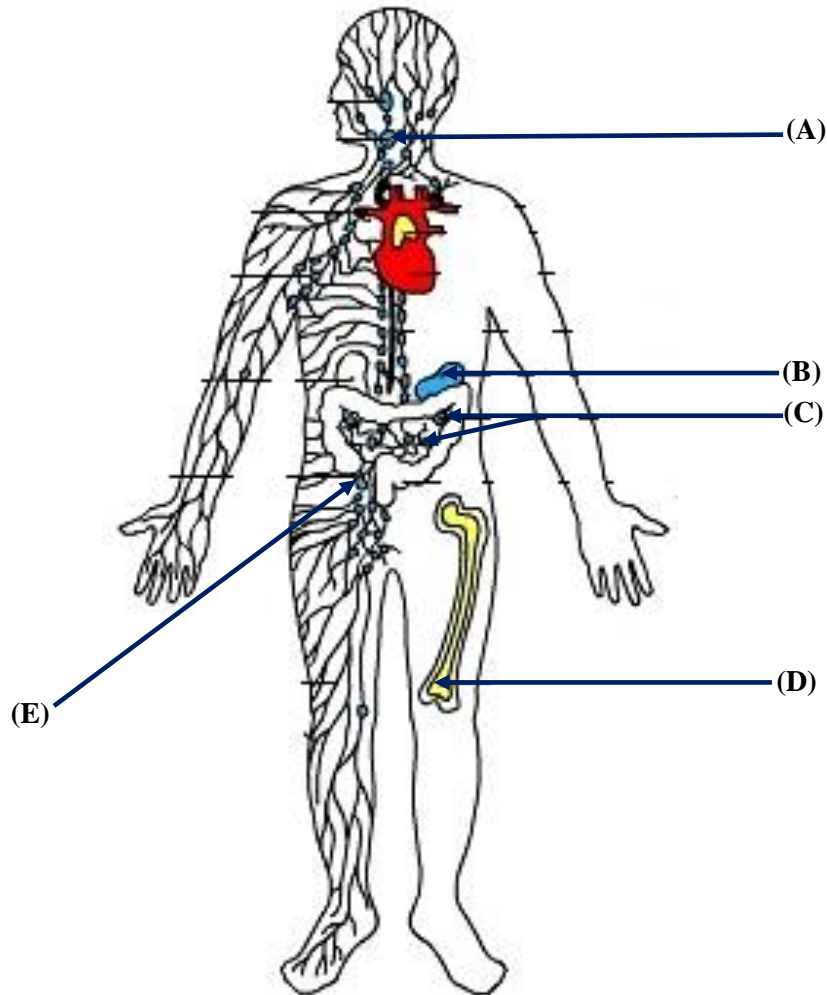
Gurudas College

ZOOLOGY – HONOURS

Paper: CC-10-P

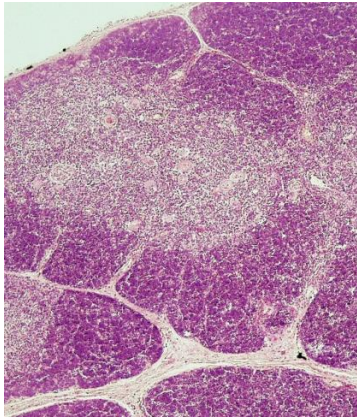
Full Marks: 30

1. Identify the Lymphoid organs mentioned in the picture by arrows (A), (B), (C), (D) and (E). State one function of each of them. 5X2

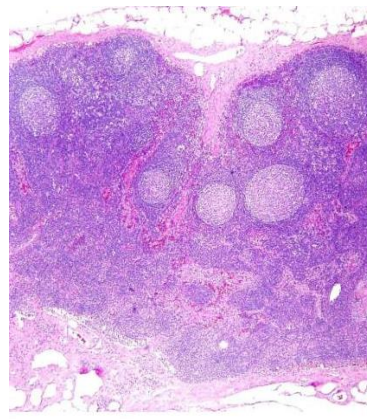


2. Identify the following two specimens with four identifying characters from each.

5+5



(A)



(B)

3. Mention different types of enzyme-linked immunosorbent assays. Describe the process of ELISA step- by- step. Give the applications of it.

.2+6+2